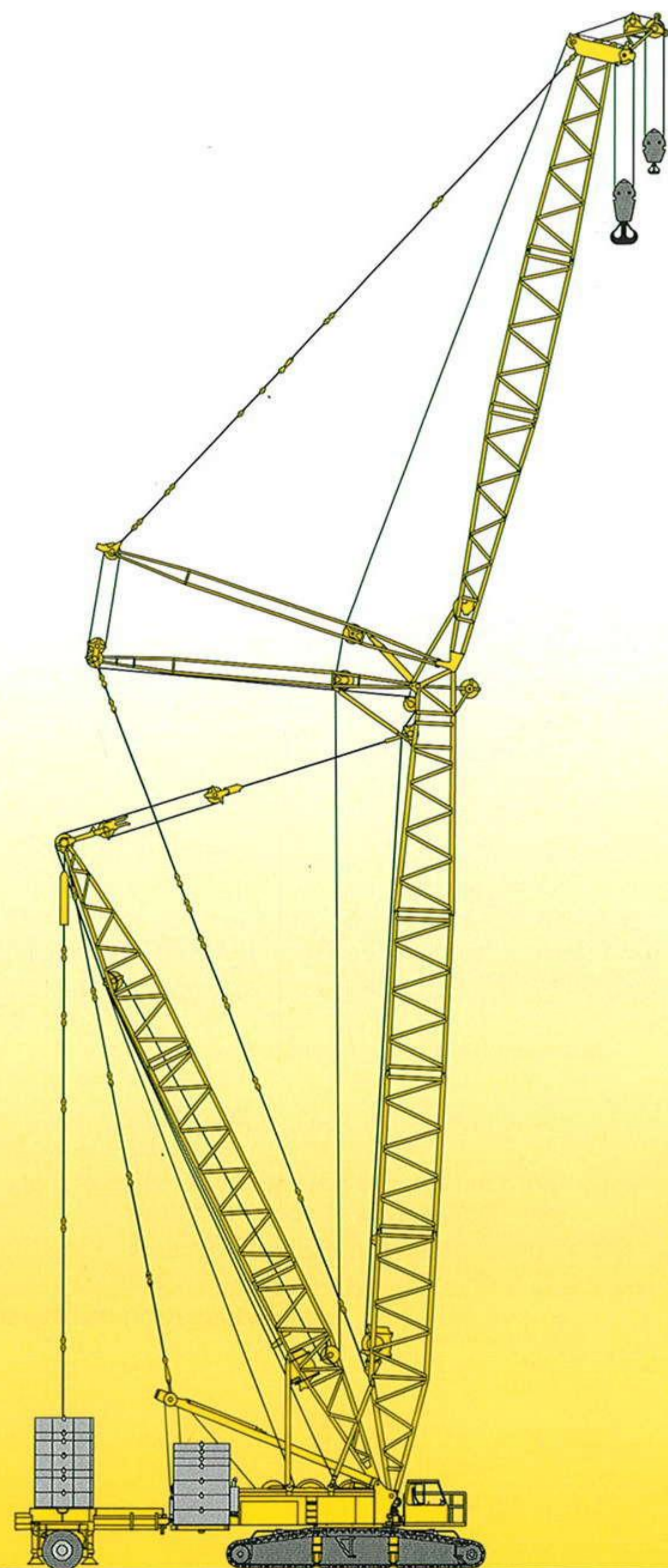


# Raupenkran · Crawler Crane Grue sur chenilles

# LR 1350/1

**Technische Daten**  
**Technical Data**  
**Caractéristiques techniques**

GRUAS  
**FAM**  
Guarnizo (Cantabria) - Telf. 942 55 80 00



GRUAS  
**FAM**

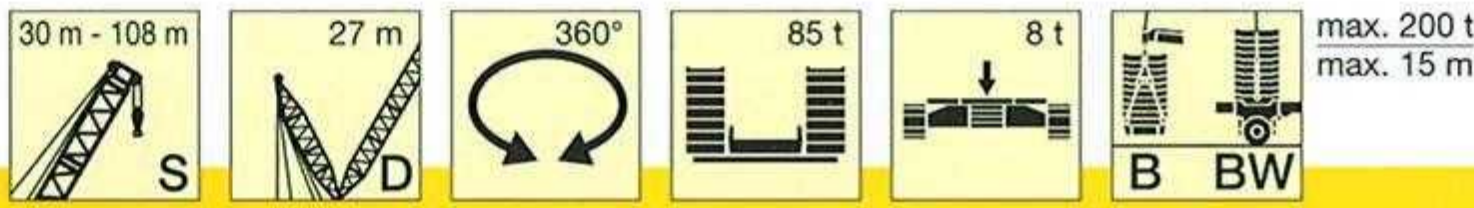
# LIEBHERR



# Traglasten am SDB/BW-Auslegersystem

## Lifting capacities on SDB/BW boom/derrick combination

### Forces de levage en configuration SDB/BW



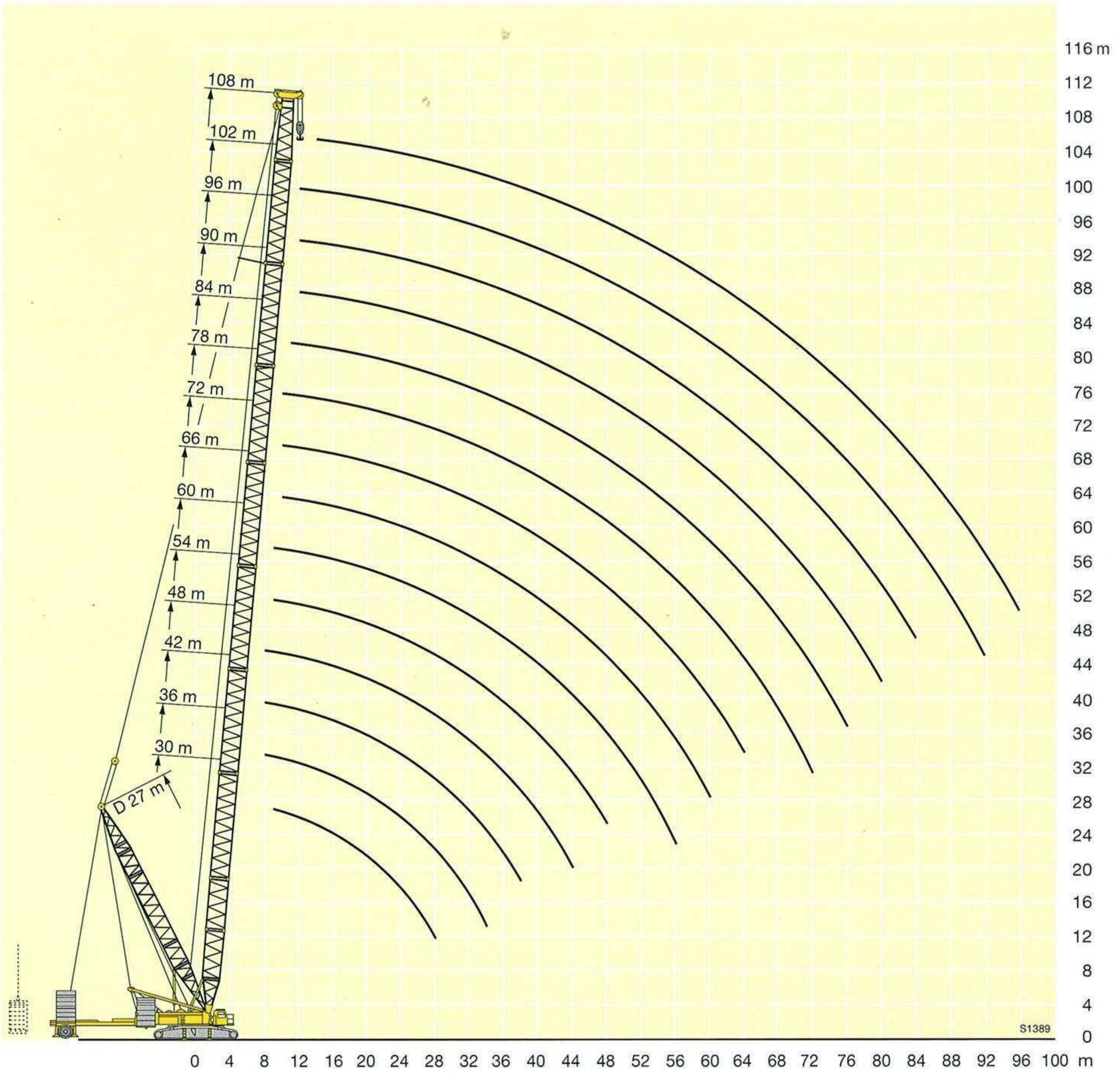
| ↙ m ↘ | 30 m | 36 m | 42 m | 48 m | 54 m | 60 m | 66 m | 72 m | 78 m | 84 m | 90 m | 96 m | 102 m | 108 m | ↘ m ↙ |
|-------|------|------|------|------|------|------|------|------|------|------|------|------|-------|-------|-------|
| 6,5   | 300  |      |      |      |      |      |      |      |      |      |      |      |       |       | 6,5   |
| 7     | 300  | 300  |      |      |      |      |      |      |      |      |      |      |       |       | 7     |
| 8     | 300  | 300  | 300  | 281  |      |      |      |      |      |      |      |      |       |       | 8     |
| 9     | 300  | 300  | 300  | 280  | 246  | 209  |      |      |      |      |      |      |       |       | 9     |
| 10    | 300  | 300  | 300  | 277  | 243  | 207  | 177  | 157  | 135  |      |      |      |       |       | 10    |
| 11    | 300  | 300  | 300  | 275  | 240  | 205  | 175  | 156  | 134  | 116  |      |      |       |       | 11    |
| 12    | 300  | 300  | 295  | 272  | 238  | 203  | 174  | 155  | 133  | 115  | 100  | 85   | 74    |       | 12    |
| 14    | 264  | 272  | 267  | 269  | 234  | 200  | 172  | 153  | 132  | 113  | 98   | 83   | 73    | 61    | 14    |
| 16    | 229  | 243  | 239  | 241  | 230  | 197  | 170  | 152  | 130  | 111  | 96   | 82   | 72    | 61    | 16    |
| 18    | 201  | 217  | 215  | 218  | 212  | 194  | 167  | 148  | 128  | 109  | 95   | 81   | 71    | 60    | 18    |
| 20    | 177  | 192  | 197  | 198  | 195  | 189  | 164  | 145  | 125  | 106  | 94   | 80   | 70    | 59    | 20    |
| 22    | 158  | 172  | 182  | 181  | 180  | 178  | 161  | 142  | 122  | 104  | 94   | 80   | 70    | 58    | 22    |
| 24    | 141  | 154  | 162  | 165  | 164  | 164  | 155  | 139  | 119  | 101  | 92   | 78   | 69    | 57    | 24    |
| 26    | 125  | 139  | 148  | 149  | 150  | 150  | 146  | 135  | 115  | 98   | 91   | 76   | 68    | 56    | 26    |
| 28    | 106  | 126  | 135  | 138  | 138  | 138  | 136  | 129  | 112  | 96   | 89   | 75   | 67    | 55    | 28    |
| 30    |      | 114  | 123  | 129  | 127  | 127  | 126  | 122  | 109  | 93   | 88   | 73   | 65    | 53    | 30    |
| 32    |      | 103  | 112  | 118  | 117  | 118  | 117  | 115  | 106  | 90   | 87   | 72   | 64    | 52    | 32    |
| 34    |      | 89   | 102  | 109  | 108  | 110  | 109  | 108  | 103  | 87   | 86   | 70   | 63    | 51    | 34    |
| 36    |      |      | 93   | 101  | 101  | 103  | 102  | 102  | 98   | 84   | 85   | 69   | 62    | 50    | 36    |
| 38    |      |      | 83   | 93   | 93   | 95   | 96   | 95   | 93   | 82   | 82   | 68   | 61    | 48,5  | 38    |
| 40    |      |      |      | 86   | 88   | 90   | 90   | 90   | 88   | 79   | 79   | 67   | 59    | 47,5  | 40    |
| 44    |      |      |      | 72   | 77   | 79   | 80   | 80   | 78   | 73   | 73   | 64   | 54    | 46    | 44    |
| 48    |      |      |      |      | 66   | 69   | 71   | 71   | 70   | 68   | 66   | 60   | 51    | 43    | 48    |
| 52    |      |      |      |      |      | 60   | 63   | 63   | 64   | 61   | 59   | 56   | 47,5  | 40,5  | 52    |
| 56    |      |      |      |      |      | 51   | 56   | 57   | 57   | 55   | 53   | 51   | 44,5  | 38    | 56    |
| 60    |      |      |      |      |      |      | 48,5 | 51   | 51   | 49   | 47   | 45,5 | 42    | 35,5  | 60    |
| 64    |      |      |      |      |      |      |      | 44,5 | 45,5 | 44   | 41,5 | 42   | 39,5  | 33,5  | 64    |
| 68    |      |      |      |      |      |      |      |      | 40,5 | 39,5 | 38,5 | 38   | 36,5  | 31,5  | 68    |
| 72    |      |      |      |      |      |      |      |      | 36   | 36,5 | 36   | 35,5 | 34    | 29,1  | 72    |
| 76    |      |      |      |      |      |      |      |      |      | 32,5 | 33,5 | 33   | 32    | 26,7  | 76    |
| 80    |      |      |      |      |      |      |      |      |      |      | 30   | 29,8 | 29,9  | 24,5  | 80    |
| 84    |      |      |      |      |      |      |      |      |      |      |      | 26,6 | 27,3  | 22,3  | 84    |
| 88    |      |      |      |      |      |      |      |      |      |      |      |      | 24,7  | 20,2  | 88    |
| 92    |      |      |      |      |      |      |      |      |      |      |      |      | 22    | 17,8  | 92    |
| 96    |      |      |      |      |      |      |      |      |      |      |      |      |       | 15    | 96    |

TAB 136022 / 136023 / 136024 / 136123 / 136125 / 136126 / 136127





**Hubhöhen am SDB/BW-Auslegersystem**  
**Lifting heights on SDB/BW boom/derrick combination**  
**Hauteur de levage en configuration SDB/BW**



GRUAS  
**FAM**  
 Guarnizo (Cantabria) - Telf. 942 55 80 00

