

Crawler Crane

Technical Data

LR 1250

Litronic®

Derrick Equipment

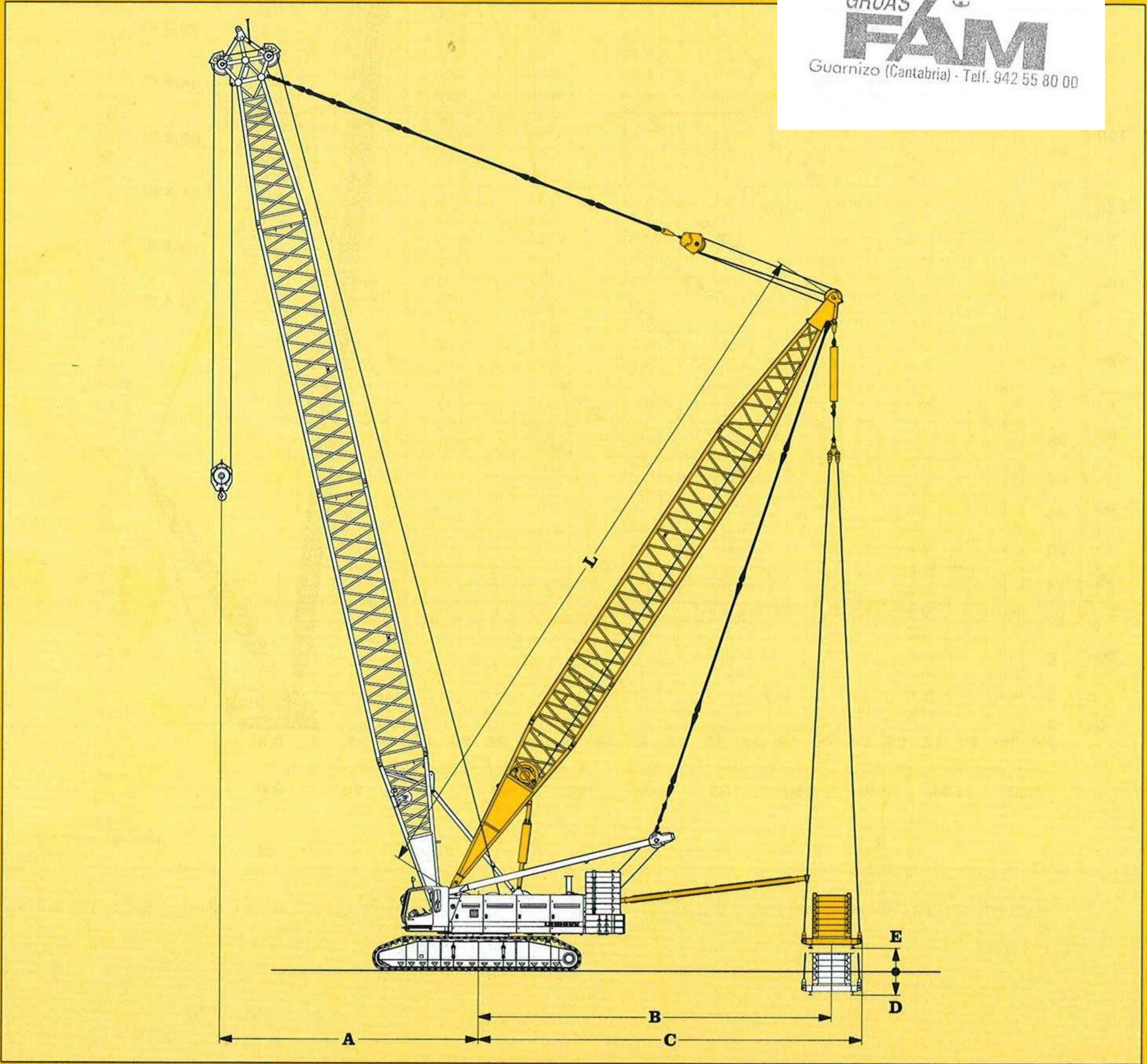


Fig. 1: Dimensions in

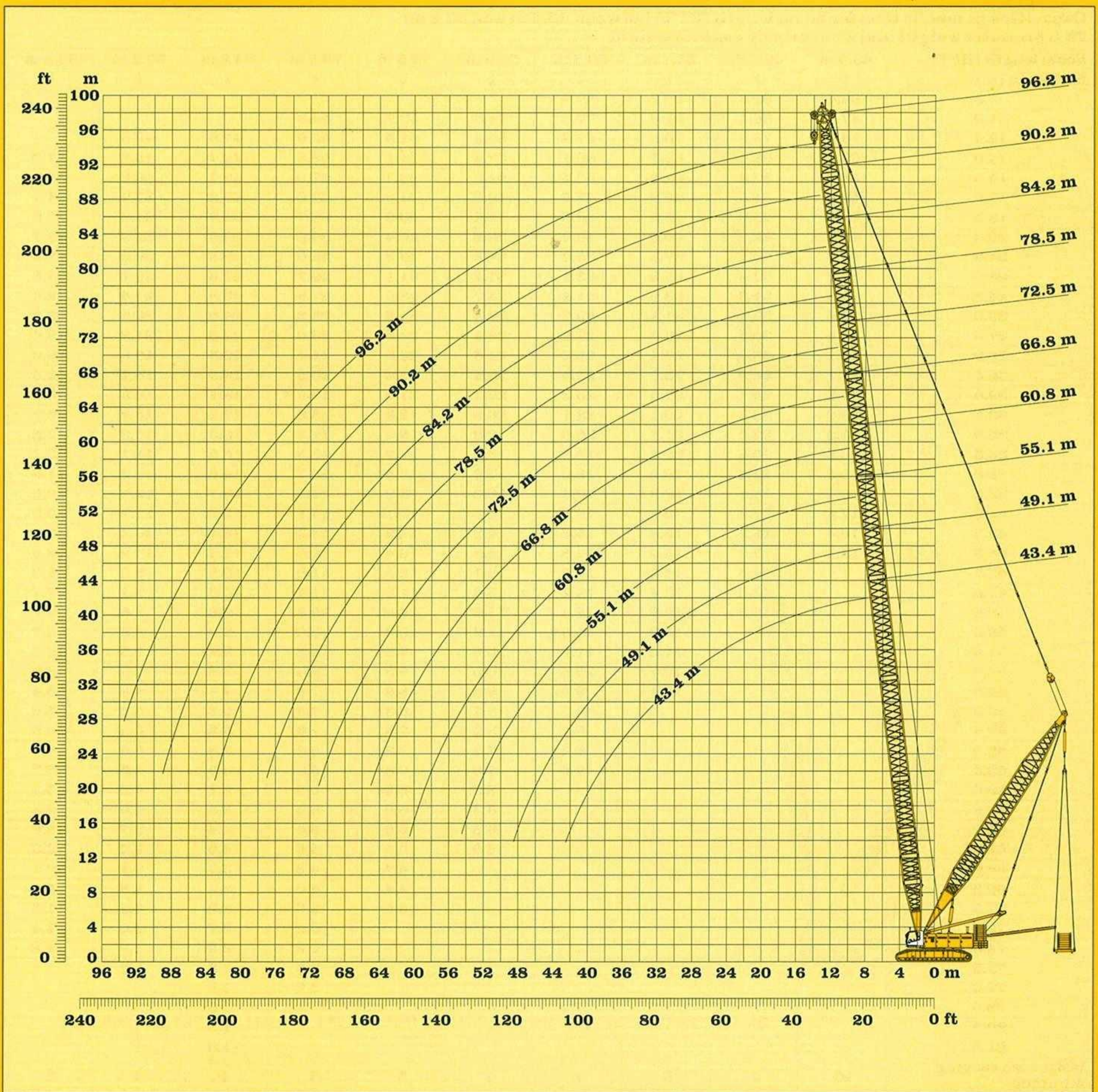
mm

A Working radius			
B Centre of rotation - centre of counterweight	15000	D Displacement of counterweight frame below ground level	1000
C Tail swing radius with susp. counterweight	16300	E Displacement of counterweight frame above ground level	1000
L Derrick length	30000		



LEIBNER

The Better Machine



Working range - main boom with derrick and suspended counterweight

**Capacities in metric tons for boom length (HPT) between 43.4 m and 96.2 m:
75.3 t counterweight, 27 t carbody counterweight and max. 120 t suspended counterweight**

Boom length (HPT)	43.4 m	49.1 m	55.1 m	60.8 m	66.8 m	72.5 m	78.5 m	84.2 m	90.2 m	96.2 m
Radius in (m)	t	t	t	t	t	t	t	t	t	t
9.5	130.6	104.8	99.9	83.8						
11.0	134.3	114.4	99.8	83.8	73.1	62.1	55.1			
12.5	133.2	113.7	99.2	83.8	73.1	62.1	55.1	46.9	41.5	
14.0	131.8	112.9	98.4	83.8	73.1	62.1	55.1	46.9	41.5	36.6
15.5	130.5	111.9	97.7	83.8	73.1	62.1	55.1	46.9	41.5	36.6
17.0	127.9	110.9	97.0	83.4	73.1	62.1	55.1	46.9	41.5	36.5
18.5	121.3	109.5	96.2	82.8	72.7	62.0	55.1	46.9	41.5	36.2
20.0	114.8	105.6	95.4	82.2	72.2	61.7	55.0	46.9	41.5	35.7
21.5	108.2	101.3	93.0	81.7	71.8	61.4	54.7	46.7	41.5	35.3
23.0	101.9	97.1	89.9	80.3	71.3	61.0	54.4	46.4	41.2	34.8
24.5	96.0	92.8	86.9	78.4	70.6	60.6	54.0	46.0	40.7	34.2
26.0	90.1	88.4	83.8	76.5	69.2	60.2	53.7	45.7	40.1	33.6
27.5	84.1	83.7	80.8	74.7	67.9	59.6	53.3	45.3	39.6	33.0
29.0	78.2	79.1	77.1	72.8	66.6	58.9	52.8	44.9	39.0	32.5
30.5	73.3	74.4	73.3	70.7	65.3	58.2	52.3	44.5	38.5	31.9
32.0	69.7	69.8	69.4	67.9	64.0	57.5	51.7	44.2	38.1	31.3
33.5	66.1	65.3	65.6	65.0	62.4	56.8	51.2	43.8	37.8	30.8
35.0	62.5	62.4	61.7	62.1	60.0	56.1	50.7	43.5	37.6	30.5
36.5	58.9	59.6	57.9	59.1	57.6	54.8	50.1	43.1	37.3	30.3
38.0	55.4	56.8	55.0	56.2	55.2	52.9	49.6	42.8	37.1	30.0
39.5	52.6	54.0	52.9	53.3	52.8	51.0	48.4	42.4	36.8	29.8
41.0	49.9	51.1	50.8	50.5	50.4	49.0	46.8	42.0	36.6	29.6
42.5	47.1	48.4	48.7	48.6	47.9	47.1	45.2	41.0	36.4	29.3
44.0		46.2	46.6	46.7	45.5	45.1	43.7	39.8	36.0	29.1
45.5		43.9	44.5	44.9	43.6	43.2	42.1	38.7	35.2	28.9
47.0		41.7	42.4	43.0	42.1	41.2	40.5	37.6	34.3	28.5
48.5		39.5	40.6	41.1	40.6	39.4	38.9	36.5	33.5	27.9
50.0			38.8	39.3	39.1	38.2	37.3	35.3	32.6	27.3
51.5			37.1	37.4	37.6	36.9	35.7	34.2	31.8	26.7
53.0			35.4	35.8	36.1	35.6	34.5	33.1	30.9	26.2
54.5			33.6	34.4	34.5	34.3	33.4	31.9	30.1	25.6
56.0				33.0	33.0	33.1	32.4	30.9	29.2	25.0
57.5				31.6	31.6	31.8	31.3	30.0	28.3	24.4
59.0				30.2	30.5	30.5	30.2	29.1	27.5	23.8
60.5				28.8	29.3	29.2	29.1	28.1	26.7	23.2
62.0					28.2	28.0	28.1	27.2	26.0	22.6
63.5					27.0	27.1	27.0	26.3	25.2	22.1
65.0					25.8	26.1	25.9	25.4	24.5	21.5
66.5						25.1	24.8	24.5	23.7	20.9
68.0						24.1	24.0	23.6	23.0	20.4
69.5						23.1	23.2	22.7	22.2	19.8
71.0						22.1	22.3	21.8	21.5	19.3
72.5							21.5	21.0	20.7	18.7
74.0							20.7	20.3	20.0	18.2
75.5							19.8	19.6	19.2	17.6
77.0							19.0	18.9	18.6	17.0
78.5								18.2	17.9	16.5
80.0								17.5	17.3	15.9
81.5								16.8	16.7	15.3
83.0								16.1	16.1	14.7
84.5									15.4	14.0
86.0									14.8	13.3
87.5									14.2	12.7
89.0									13.5	12.0
90.5										11.3
92.0										10.7
93.5										10.0
Hoist rope reeving minimum	10	9	8	7	6	5	5	4	4	3

The weight of the suspended counterweight may vary and needs to be adapted to the actual lift. Above lift chart is for reference only. For actual lift duty please refer to lift chart in operator's cab or manual.



Lifting capacities - main boom with derrick and suspended counterweight